

**Responses-to-Comments**

**Temporary Open Storage of Construction Materials, Machinery and Vehicles with Ancillary Facilities for a Period of 3 Years in "Open Space" and "Residential (Group A)3" Zones, Lots 1824 S.B RP (Part) and 1824 S.C (Part) in D.D. 125, Hung Shui Kiu, Yuen Long, New Territories**

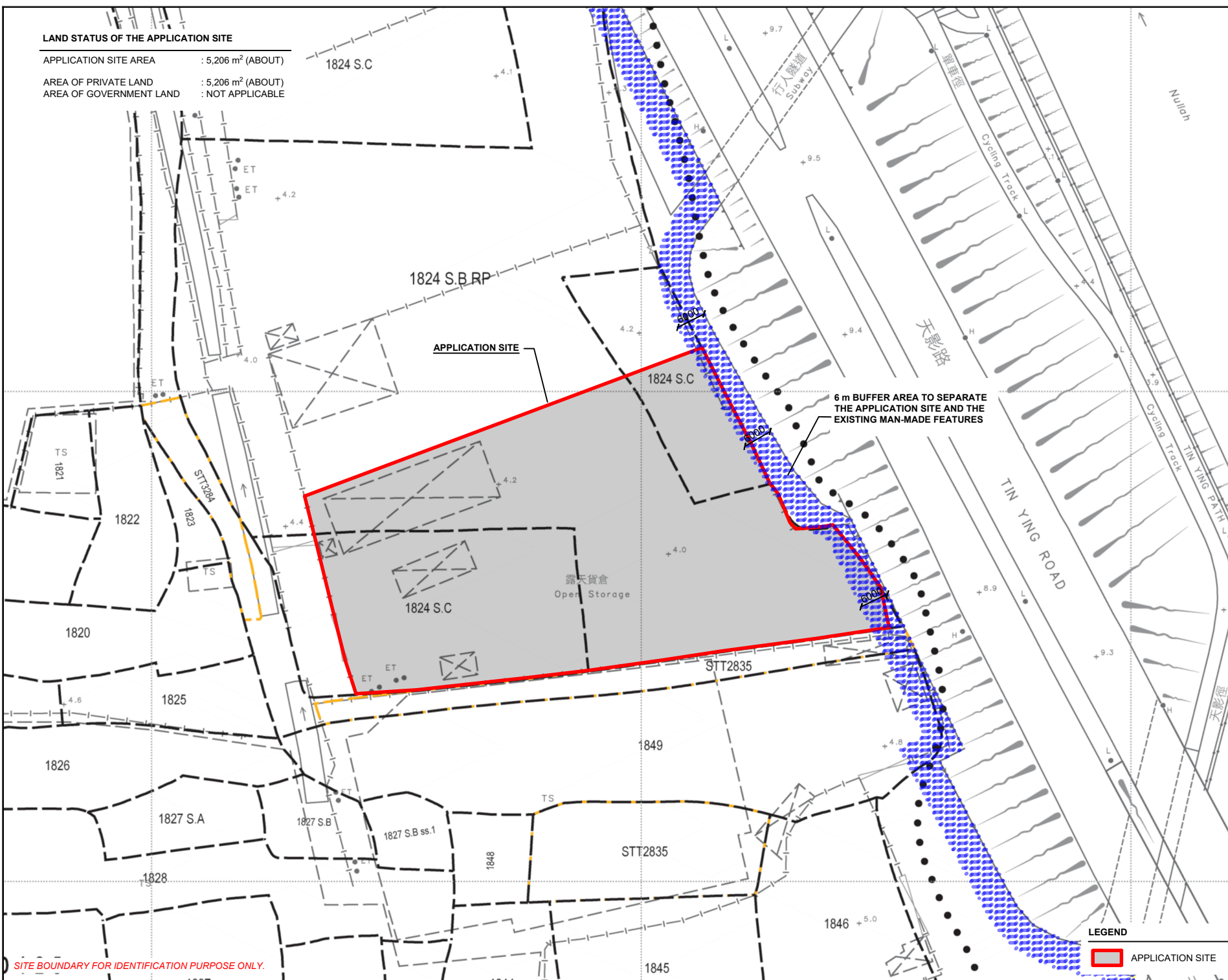
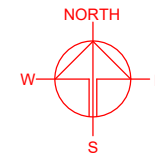
**(Application No. A/HSK/590)**

(i) A RtoC Table:

Departmental Comments		Applicant's Responses
<b>1. Comments of the Geotechnical Engineering Office/Civil Engineering and Development Department (GEO, CEDD)</b>		
(a)	There are two registered man-made features (i.e. Feature No. 6NW-A/F79 and 6NW-A/FR80) with maximum height of 6m located within 6m of the application site, which may affect or be affected by the proposed development. Therefore, please submit a Geotechnical Planning Review Report (GPRR) with your planning application in accordance with the Guidance Notes for Application for Permission under Section 16 of the Town Planning Ordinance (CAP. 131).	<p>Please note that 6m buffer area will be provided to separate the application site (the Site) and the existing man-made features (<b>Plans 1 &amp; 2</b>). No structure will be erected on the buffer area, and no open storage and loading/unloading activities will be carried out on the buffer area.</p> <p>In addition, the Site is the subject of a previous application (No. A/HSK/218) for the same 'open storage' use, which was approved by the Town Planning Board on a temporary basis of 3 years in 2020. In the light of the above, the applied use would not cause any adverse geotechnical impact to the surrounding areas.</p>

# LAND STATUS OF THE APPLICATION SITE

APPLICATION SITE AREA : 5,206 m<sup>2</sup> (ABOUT)  
 AREA OF PRIVATE LAND : 5,206 m<sup>2</sup> (ABOUT)  
 AREA OF GOVERNMENT LAND : NOT APPLICABLE



PLANNING CONSULTANT

1:1:2:LogPlanning.jpg (2025/10/15)

PROJECT

PROPOSED TEMPORARY OPEN STORAGE OF CONSTRUCTION MATERIALS, MACHINERY AND VEHICLES WITH ANCILLARY FACILITIES FOR A PERIOD OF 3 YEARS

SITE LOCATION

VARIOUS LOTS IN D.D. 125, HUNG SHUI KIU, YUEN LONG, NEW TERRITORIES

SCALE

1: 1000 @ A4

DRAWN BY

MN

DATE

15.10.2025

CHECKED BY

DATE

APPROVED BY

DATE

DWG. TITLE

LAND STATUS OF THE SITE

DWG NO.

PLAN 1

VER.

001

LEGEND

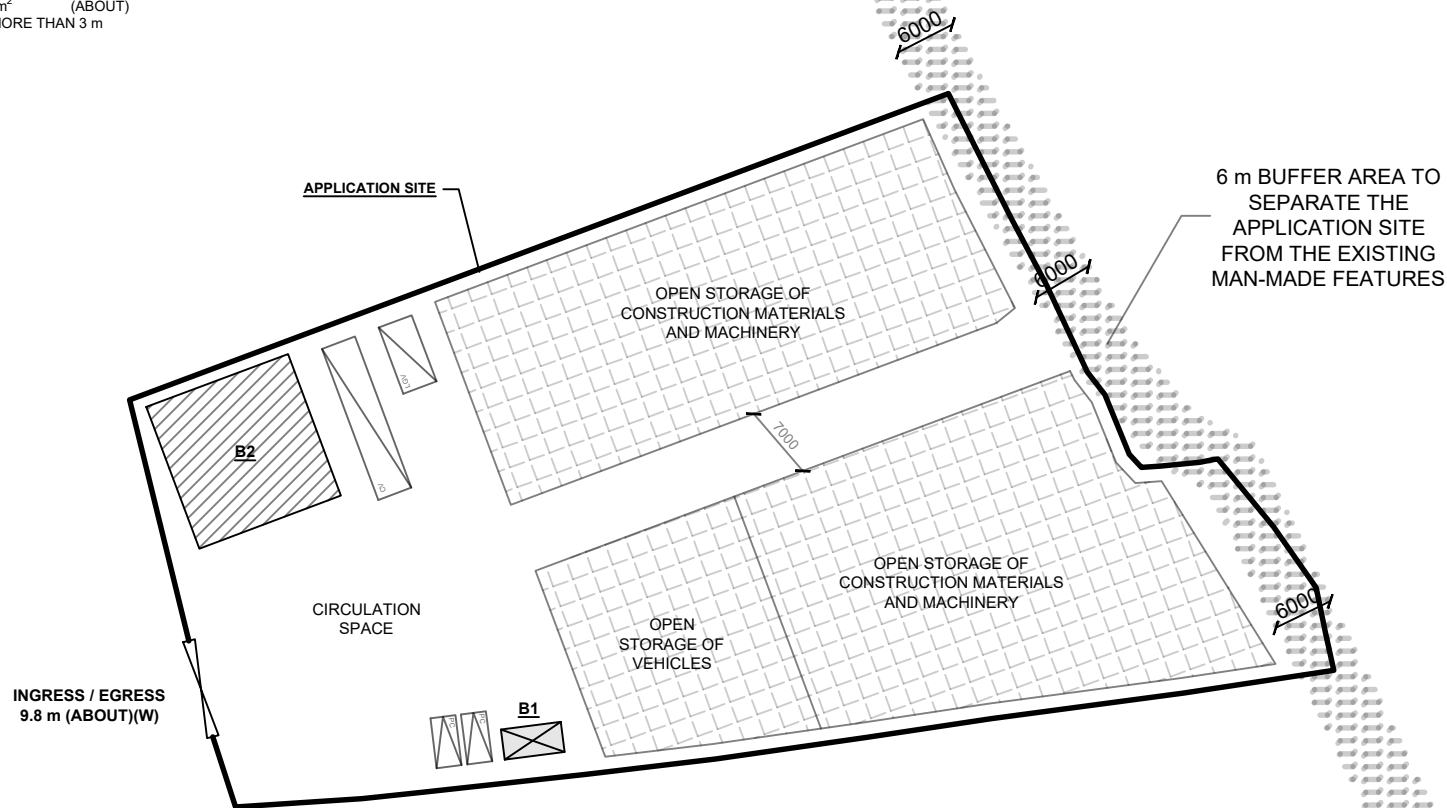
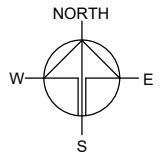


APPLICATION SITE

# DEVELOPMENT PARAMETERS

APPLICATION SITE AREA	: 5,206 m <sup>2</sup>	(ABOUT)
COVERED AREA	: 234 m <sup>2</sup>	(ABOUT)
UNCOVERED AREA	: 4,972 m <sup>2</sup>	(ABOUT)
PLOT RATIO	: 0.04	(ABOUT)
SITE COVERAGE	: 4%	(ABOUT)
NO. OF STRUCTURE	: 2	
DOMESTIC GFA	: NOT APPLICABLE	
NON-DOMESTIC GFA	: 234 m <sup>2</sup>	(ABOUT)
TOTAL GFA	: 234 m <sup>2</sup>	(ABOUT)
BUILDING HEIGHT	: 3 m - 7 m	(ABOUT)
NO. OF STOREY	: 1	
OPEN STORAGE AREA	: 2,756 m <sup>2</sup>	(ABOUT)
STACKING HEIGHT	: NOT MORE THAN 3 m	

STRUCTURE	USE	COVERED AREA	GROSS FLOOR AREA	BUILDING HEIGHT
B1	SITE OFFICE AND WASHROOM	18 m <sup>2</sup> (ABOUT)	18 m <sup>2</sup> (ABOUT)	3 m (ABOUT)(1-STOREY)
B2	STORAGE OF CONSTRUCTION MATERIALS AND MACHINERY	216 m <sup>2</sup> (ABOUT)	216 m <sup>2</sup> (ABOUT)	7 m (ABOUT)(1-STOREY)
TOTAL		234 m <sup>2</sup> (ABOUT)	234 m <sup>2</sup> (ABOUT)	



## PARKING PROVISION

NO. OF PRIVATE CAR PARKING SPACE	: 2
DIMENSION OF LOADING/UNLOADING SPACE	: 5 m (L) X 2.5 m (W)

## LOADING/UNLOADING (L/UL) PROVISION

NO. OF L/UL SPACE FOR LIGHT GOODS VEHICLE	: 1
DIMENSION OF LOADING/UNLOADING SPACE	: 7 m (L) X 3.5 m (W)
NO. OF L/UL SPACE FOR CONTAINER VEHICLE	: 1
DIMENSION OF LOADING/UNLOADING SPACE	: 16 m (L) X 3.5 m (W)

SITE BOUNDARY FOR IDENTIFICATION PURPOSE ONLY.

## LEGEND

	APPLICATION SITE
	STRUCTURE (ENCLOSED)
	STRUCTURE (SHED)
	PARKING SPACE (PC)
	LOADING / UNLOADING SPACE (LGV)
	LOADING / UNLOADING SPACE (OV)
	INGRESS / EGRESS

PLANNING CONSULTANT

..1..1..LogoPlanning logo (20250415).png

PROJECT

PROPOSED TEMPORARY OPEN STORAGE OF CONSTRUCTION MATERIALS, MACHINERY AND VEHICLES WITH ANCILLARY FACILITIES FOR A PERIOD OF 3 YEARS

SITE LOCATION

VARIOUS LOTS IN D.D. 125, HUNG SHUI KIU, YUEN LONG, NEW TERRITORIES

SCALE

1 : 750 @ A4

DRAWN BY MN DATE 15.10.2025

CHECKED BY DATE

APPROVED BY DATE

DWG. TITLE

LAYOUT PLAN

DWG NO. PLAN 2

VER. 001